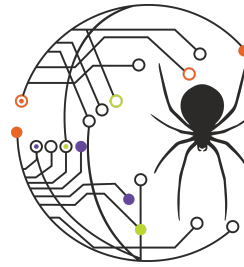


# Spider Learning, Inc.

Pittsburgh, PA  
www.spiderlearning.com  
412-444-8346  
@spiderlearning  
info@spiderlearning.com



## Teacher Survey Data Report

2018-19 School Year - Semester 1

### Overview

Each semester, Spider Learning surveys the teachers using the curriculum and blended learning tools in their classrooms. The survey, comprised of 25 questions, is divided into four sections; Delivery and Use, Classroom Command Center, Content and Curriculum, and Support and Additional Needs. The questions are a mix of multiple-choice, linear scale and open response and are designed to elicit anonymous feedback that can identify strengths and areas of improvement regarding the content, technology tools and customer support.

### Process

The survey was sent to 108 teachers who have access to both the content (Online Resource Bundles/ORBs) and the Classroom Command Center. As the results of the surveys come in, the results are reviewed from both an individual school district and holistic perspective. Although the surveys are anonymous per user, the responses do identify the client / district where they originated. This allows us to best understand the needs of each client but also allows us to aggregate the data into a large set of feedback and results. Additionally, the responses provide both quantitative (linear scale and objective responses) and qualitative data (open response and subjective data). The summary data presented in the following section derives from the quantitative results in aggregate. Qualitative data from the survey is used to provide teachers and administrators with the opportunity to express their feedback in their own words. These testimonials are commonly used as part of our Spider Learning Spotlight series that highlights the work of a teacher or administrator within their district as a partner of Spider Learning.

For access to the Spider Learning Spotlight series, click on the icon linked to the right:



## Results

### Student Engagement

*How would rate the level of student engagement since you began using the Classroom Command Center?*

Results:

100% of the Blended Classroom teachers rated the level of student engagement higher or significantly higher after introducing our resources into their classroom.

### Classroom Management

*How has the Classroom Command Center affected your classroom management?*

Results:

92% said that the Classroom Command Center makes managing their classroom significantly easier, the remaining 8% reported they are not yet using the Classroom Command Center tool.

### Personalized Learning

*How has Classroom Command Center impacted the level of personalized learning in your classroom?*

Results:

100% of the respondents reported an increase in Personalized Learning and Student Agency since implementing Online Resource Bundles in their classroom.

## Use of Data

*How important has the data generated by students been to your instruction?*

Results:

100% of the respondents reported a greater level of data driven based instructional decisions than prior to using the content.

83% found the visual data to be “Very Important” to their distribution of learning resources.

## Scope and Sequence Coverage

*How well do the Spider Learning topics cover the content you need to teach in your curriculum? Estimate the percentage on the scale provided.*

Results:

Respondents reported that our content was used for classroom instruction an average of 91% of the time.

## Quality of Content

*How would you rate the overall quality of the digital content you and your students are using?*

Results:

93% of the respondents rated the overall quality of the content as high or very high.

100% of the respondents rated the quality of the multimedia as high or very high.



*“The level of student engagement in my classroom has been significantly raised because the learning is personalized.”*

## Planning and Preparation

*How has the Spider Learning content affected the time you spend planning and preparing for class?*

Results:

94% of all teachers using Online Resource Bundles (ORBs) reported a reduction in the amount of time planning and preparing for class. (This includes teachers using the courses in fully asynchronous virtual classroom environments.)

100% of the teachers using the Classroom Command Center in a Blended Learning Classroom reported a reduction or significant reduction in the amount of time planning and preparing for class.

## Ease of Use

*How would you rate the ease-of-use of the Classroom Command Center to find and assign content to your students?*

Results:

100% of the respondents using the Classroom Command Center rated its ease-of-use as “Easy” or “Very Easy”.

## Responsiveness and Support

*How would you rate the responsiveness and overall support of the Spider Learning team?*

Results:

100% of the respondents rated the responsiveness of the Spider Learning team as “High” or “Very High”.

## Recommend to Peers

*Would you recommend the Spider Learning content and tools to your peers?*

Results:

100% of the respondents would recommend using Spider Learning content and tools in the Blended Classroom environment to their peers.